



GREENSHEET



No. 28/15

Church Hill, Walthamstow, London, E17 9RZ

Telephone: 020 8509 9446

Email: info@wsfg.waltham.sch.uk

Website: www.wsfg.waltham.sch.uk

Student Absence Line: 020 8509 9444

21st April 2016

Week 'B'

HEADTEACHER'S MESSAGE

Dear Parents and Carers,

The weather has been lovely this week, and the girls have been sitting out in the grounds, relaxing amongst their friends-and making daisy chains! Long may this weather, and their youth, last. Happy memories, I am sure.

We wish every success to our Year 11 students who have had a week of GCSE language orals. Also to those who have had their Science practical assessments.

Our KS3 theatre group perform their fantastic play *Take Away* at the Soho Theatre on Thursday. Their in-school performance last term was already very polished so we wish them every success at their public performance; 'break a leg, girls'. Suffice to say that onions feature quite heavily in the performance!

I am grateful to all the students and staff who have met with me as part of our review of the school logo/badge. A number of favoured proposals have been submitted to the designer. Once we have the preferred design, I will share this with you. The next stage will be to examine our school uniform, to see what improvements can be made. As you can imagine, the girls have been very forthright.

Amongst a number of trips and activities this week, the Year 10 Business and Hospitality students spent a day learning about how customer service is delivered at Chessington World of Adventures. Students attended a workshop which explored how different members of staff deliver exceptional customer service, in addition to how the park meets the needs of over 15,000 'thrill seekers'.

Contd.

SCHOOL CALENDAR Summer Term 2016

End - Friday
15th July 2016

Monday 2nd
May
Bank Holiday

Monday 16th
May Year 11
Written
Examinations
begin

Half Term -
Monday 30th
May to Friday
3rd June

Monday 6th -
Friday 17th
June Key Stage
3 Examinations
fortnight

Monday 20th
June - Friday
1st July
Year 10
Examinations

Friday 24th
June Year 11
Leavers' Day

Students also looked at example customer complaints ranging from complaints about the weather to lions roaring too loud! The trip will support students with completing 25% of their assignment – which will include role plays of situations where exceptional customer service skills will be deployed.

Best wishes
Meryl Davies

Parent Information

Dear Parents/Carers,

In an attempt to save time and paper, WSFG aims to keep you informed of important communication, including our weekly Greensheet, by using email. We currently hold parent/carers' email addresses for around 840 of our students.

Please take a moment to inform us of your email address, if you have not done so already, via info@wsfg.waltham.sch.uk.

Your email address will not be shared or used for any other purpose.
Thank you.

Ms N Janes
Administrative Manager

LOST PROPERTY ALERT

Has your daughter lost a coat, trainers, warm scarf, glasses or keys in the last few months?

If so, she should visit **Mrs Jolliffe in Student Services 3.30-4pm after school, Tuesday to Friday** to check through the lost property that has been accumulating.



The cold weather is due to return soon, so don't miss this chance to be reunited with your long-lost warm clothes!

Items that have not been collected by the end of April will be donated to charity.

NB Putting her name (and form) on clothes/shoes/bags/valuables makes it much easier to trace the owner if they are handed in to Student Services.

SCHOOL CALENDAR FOR ACADEMIC YEAR 2015/16

Summer Term 2016

Start - Monday 11th April 2016

End - Friday 15th July 2016**

**Please note this change to the published date in the student planner

Monday 2nd May

Monday 16th May

Bank Holiday

Year 11 Written Examinations begin

Half Term - Monday 30th May to Friday 3rd June

Monday 6th - Friday 17th June

Monday 20th June - Friday 1st July

Friday 24th June

Monday 27th June

Thursday 30th June

Key Stage 3 Examinations fortnight

Year 10 Examinations

Year 11 Leavers Day

Year 11 Written Examinations end

Year 7 Parent/Carer Consultation

Evening

Monday 4th - Wednesday 13th July

Friday 8th July

Year 10 Work Experience

Key Stage 3 Transition Event

Year 7 & Year 8 Accelerated Readers

Well done to all those students who have taken AR quizzes, here are the number of words read and quizzes taken before the Easter holiday.

Ms Kelly & Mrs Guest

LRC

Form	Quizzes	Words Read
7W	199	9,131,900
7S	266	10,250,752
7F	379	16,266,229
7G	196	6,601,226
7C	315	15,084,671
7H	520	27,707,593

Form	Quizzes	Words Read
8W	348	19,746,840
8S	318	14,962,211
8F	368	20,397,218
8G	217	10,879,991
8C	233	9,267,537
8H	201	10,387,665

Focus of the Fortnight
25th April – 6th May 2016.

Lunchtime Behaviour

Dear Parents / Carers,

The Focus of the Fortnight is about the Lunchtime Behaviour of the students. All students are allowed in their Form Rooms at lunchtime but to ensure that good behaviour is maintained there is a clear Lunchtime Code they have to follow. This is displayed on the wall of each Form Room and Students are now familiar with its contents. All students are expected to follow the Code and Form Rooms are required to be clean, tidy and ready for learning and teaching at the end of break and lunchtime. Each Form Group has two “Room Reps” who have extra responsibility in ensuring that Form Rooms are used well and are ready for lessons.

Thank you for your support in this and all other school matters.

Ms. Pratt
Assistant Headteacher.

The Sanctions

If a student breaks the Lunchtime Code, she will be excluded from her Form Room for two lunchtimes. She will spend one of those lunchtimes in the Duty Room as arranged by her Student Progress Leader. The conduct card will be signed.

Remember

- The school has a clear Lunchtime Code for use of Form Rooms which is on the wall of every Form Room in the school. Doors must be open, lights on and students seated on chairs etc.
- Please respect the fact that you have the privilege of going into your Form Room and ensure that it is used following the code at all times.
- If the code is not followed, individuals or the Tutor Group risk being locked out of the room by the SPL.

Diversity Event

Dear Parents, Carers of Years 8 and 9,

At WSFG, we want **every student** to feel confident about their importance as an individual in our rich and diverse school community.

We strongly believe that everyone should be regarded as an individual and **should not be stereotyped or discriminated against**.

We hope to instill in our students, the skills to challenge racism, sexism, homophobia and other injustices if they encounter them.

Therefore, we are delighted to offer **our Year 8 and 9 students** the opportunity to be part of a diversity event here at WSFG.

This will take place on **Monday 25th April** (P4 Year 9, P5 Year 8) in our Norris Hall.

We will be hosting an upcoming girl band 'Office Girls' who will discuss with students the importance of treating each other fairly, **why diversity should be celebrated**, what to do if you're being discriminated against, and why it is wrong to discriminate against other people.

The girls are all from different ethnic backgrounds / nationalities / religions so personal stories will be used which are extremely effective. The girls will also discuss radicalisation and why people become radicalised, online grooming and being safe online, as well as the importance of the four British values (The rule of law, democracy, individual liberty and respect and tolerance) following **the guidelines set by the Department of Education**. The talk is very interactive and gets the pupils involved.

Period 4 Year 9:

Register as usual with your tutors who will escort you to the Norris Hall. Sit in register order as for assemblies. Year 9 teachers to help supervise.

Period 5 Year 8:

Please go to P5 promptly where your teacher will register you and escort you to the hall. Sit with your P5 class. Year 8 teachers to help supervise.

We trust that the girls will find this an incredibly valuable experience.

Many thanks,

Ms Desbenoit (Diversity Coordinator)

Ms Philippou (Assistant Headteacher).

Performing Arts Extra Curricular Timetable Summer Term

DAY	BREAK TIME 11:00am-11:30am	LUNCHTIME 12:30pm-1:00pm	AFTERSCHOOL 3:30pm-4:30pm
Monday	String Group - W25 Flute Group - W35	Rounders club Year 7 & 8 MUGA (Ms Warren) Year 9 & 10 Cricket club (Ms Famiglietti)	Yr 7-11 Tottenham Football Coaching (Ms Wood) Sports Hall/ MUGA
Tuesday		Rounders Club Year 9 & 10 MUGA (Ms Wood) GCSE Theory (Ms Warren) G04	Roller Skating Club SH (Ms Wood) Year 7 & 8 Athletics fixtures Pool and Track WEEK A Year 9&10 Athletics fixtures Pool and Track WEEK B
Wednesday		Table Tennis Club (Ms Careless) SH Will fit club (MS Famiglietti)F55	Year 7-11 Basketball coaching (Ms Wood) SH Year 8: Barbican Box G10 (Ms Wallace) Year 7 Drama Club: Script work F11 (Ms Cornford)
Thursday		Boxing club SH (Ms Percil) Year 7 & 8 Cricket club (Ms Watts) MUGA	Choir (3.30pm-4.45pm) W33
Friday		Badminton (Ms Black) SH	



Challenge News

Talk Like TED

TED talks were recommended on our recent trip to the University of Cambridge. They help you to develop a depth of knowledge that is beyond the school curriculum.



This week, here is one about the beauty of mathematics:

The magic of Fibonacci Numbers, by Arthur Benjamin

https://www.ted.com/talks/arthur_benjamin_the_magic_of_fibonacci_numbers

Oxbridge Question

Each week there will be a question from an Oxbridge interview, taken from a book donated by Ms Dowling's Daughter who is currently studying French and Russian at Oxford.

Do you think you are clever?
(Law, Cambridge)

Discuss with your friends and family to help develop your HOTS (Higher Order Thinking Skills)

Ms Robinson

Sainsbury's Active school vouchers

WSFG is once again collecting Sainsbury's Active school vouchers, until **May 3rd 2016**.

We have one week left so please bring in as many vouchers as you can

Students can bring them into school and deposit them in the box located outside Norris Hall under the machine where you top up your one card.

The more we have the more sports equipment we can purchase.



P.E. Faculty

Our School History

Interesting Alumna:

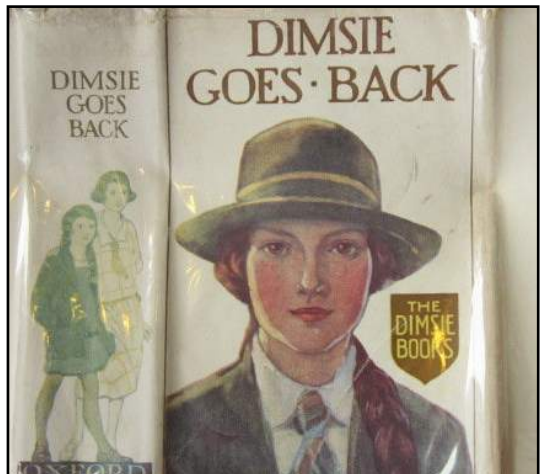
Mary Strange Reeve, 1891-1974, artist and illustrator

A recent enquiry from a researcher has revealed that one of the most prolific and popular illustrators of children's books from the 1920s-1940s was a pupil at our school. Mary Strange Reeve was born in 1891, when Walthamstow was still in Essex. It's difficult to establish when she attended the school, particularly as girls (and a few boys!) were taken from the age of 7-16 when the school first opened in 1890, but it's likely that she attended the school when it was still in Church Hill House, Church Hill. Miss Blanche Hewett was the Head from 1890 until 1924, and encouraged her students to study a broad range of subjects to a high standard, even though facilities were very limited in the original buildings. The school didn't have specialist art or science rooms until the new, purpose built school was opened in 1913.

Mary Strange Reeve and her contemporaries would have studied art and handcrafts (e.g. basket weaving) in the ordinary classrooms with wobbly desks and poor light, but this didn't seem to have held her back from taking her art further. (The school's first art teacher was Miss Blood, who started work in 1901). She attended the Regent Street Polytechnic from c.1913-1916, having already obtained excellent results in South Kensington art exams in 1907 and 1908 (e.g. in still life painting, light and shade, design and model drawing).

By the early 1920s, Mary Strange Reeve was illustrating children's books in her own very distinctive style. Many of these books were school stories by Dorita Fairlie Bruce including the hugely popular Dimsie series e.g. Dimsie Goes Back, published in 1927. Annuals and story compendiums were very successful at this time, and Mary illustrated many by Mrs Herbert Strang, e.g. the Big Book for Girls, published in 1931.

It's interesting to see that many of the heroines of these school stories wore uniforms very similar to the uniform Mary and her contemporaries would have worn - a blouse and green gymslip, with a special sash and a hat. Her schooldays in Walthamstow were obviously enjoyable, as she was a keen member of the Old Girls Association, which organised debates, whist drives and other social events for former students.

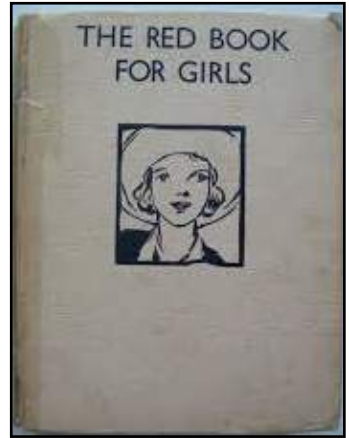


We know from the Iris magazine (now in the archive in the LRC) that she opened a debate on Women's Suffrage in 1910, so she may well have been involved with the women's suffrage movement in East London and Essex.

Some of the books Mary illustrated are now collectors' items, so look out for them in charity shops and second hand bookshops!

William Connelly, who is researching her life and work, has promised to send a copy of his book to the school, so we'll be able to find out more about this talented 'old girl'.

Mrs Finamore



Shakespeare 2016

2016 marks the 400th anniversary of the death of William Shakespeare



To commemorate this important event the LRC will be selling commemorative key rings of our Greek Theatre for £1

All Proceeds go towards the school alumnae

Provisional School Calendar for 2016-17

Autumn Term 2016

First half

Start: Thursday 1st September 2016 **End: Friday 21st October 2016**

Half Term: Monday 24-Friday 28 October 2016

Second half

Start: Monday 31st October 2016 **End: Wednesday 21st December 2016**

Spring Term 2017

First half

Start: Tuesday 3rd January 2017 **End: Friday 10th February 2017**

Half Term: Monday 13th-Friday 17th February 2017

Second half

Start: Monday 20th February 2017 **End: Friday 31st March 2017**

Easter Holiday

Easter Holiday: **Monday 3rd April 2017-Thursday 13th April 2017**

Good Friday Bank Holiday: **Friday 14th April 2017**

Easter Monday Bank Holiday: **Monday 17th April 2017**

Summer Term 2017

First half

Start: Tuesday 18th April 2017 **End: Friday 26th May 2017**

Holidays

May Day Bank Holiday: Monday 1st May 2017

Half Term: Monday 29th May-Friday 2nd June 2017

Second half

Start: Monday 5th June 2017 **End: Wednesday 19th July 2017**

Please note: training days are to be added

COMMUNITY CHAMPIONS

★ East London ★

UNITES

Saturday 30th April 2016 1-5pm
For ages 5 - 65 years old

Football Comp • **Cycling** • Cricket • **Boxing** • Climbing Wall
Art Exhibition • Poetry/Rap Competition • **Food Stalls**
Health and Well-Being Workshops
Separate Girls/Women's area for activities
and Celebration of a **United Community** in East London

Leyton Jubilee Park/Lammas School
Seymour Road, E10 7LX

For more info, email: contact@salaampeace.org | text only: 07949 983 500

ENTRY • FREE ENTRY • FREE ENTRY • FREE ENTRY • FREE ENTRY • FREE ENTRY • FREE ENTRY



Be a part of our Official Launch & Fundraiser in July!

#Educate2Eradicate

Are you a **local business** looking to gain a **community profile**?
Do you agree that **FGM and Forced Marriage** have no place in
the 21st Century?

Approximately **65,000 girls** in the UK are at risk of **being mutilated** and
a further **12,000 young people** are **forced to marry every year**.

To end this we have been **training teachers to spot the signs, and
protect young people**. We also **work with young people to break the
silence**. For the **past year we have been hard at work** to eliminate these
practices. In July we are throwing a **charity fundraising dinner to fund our
work** and **officially launch** our non-profit organisation (*Reg. no: 10053867*).

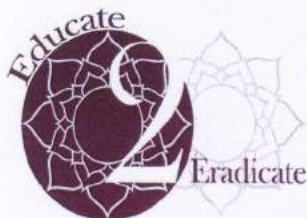


You could help us!

- By **sponsoring our event** (any amount between £20-£100). As we work within the community **we would love to strengthen links** with local businesses. That is why our **minimum sponsorship amount is £20**.
- By **donating an item** for our **auction or raffle**.

In return we can offer:

- **A Quarter to full-page feature** in the promotion book each of our 150 guests will receive on the evening.
- **Social media 'shout outs'** on in the run up to the event, promoting you to our followers.
- **Special mentions in the opening speech** of the evening.



If you can help- get in touch!

