



GREENSHEET



No. 4/15

Church Hill, Walthamstow, London, E17 9RZ

Telephone: 020 8509 9446

Email: info@wsfg.waltham.sch.uk

Website: www.wsfg.waltham.sch.uk

Student Absence Line: 020 8509 9444

24th September 2015

Week 'B'

SCHOOL CALENDAR

Autumn Term 2015

End - Friday 18th December 2015

Thursday 15th

October:

Open Evening
Early closure:
2:30pm

Friday 16th

October: Late start: 9:45am

Wednesday 21st October

Year 7 Settling in afternoon, details to follow

Half Term - Monday 26th October to Friday 30th October

HEADTEACHER'S MESSAGE

Dear Parents and Carers,

On Saturday, for the first time ever, WSFG was open to the public as part of the London Open House scheme. A number of us either led or, in my case, joined a tour and were enthralled by Ms Kelly's detailed knowledge about both the history of this Grade II listed building and a plethora of architectural details. For example, did you know that our main entrance door

'is flagged by iconic columns and, on the rounded pediment above the fanlight, there is a plaque with the Essex County Council coat of arms. The red terracotta plaque beneath the roof is embellished with pomegranates, which the Egyptians regarded as a symbol of prosperity and ambition?'

On Wednesday evening, Ms Famligetti and I were honoured to attend a grand celebration of Year 11 student achievement at Central Hall, Westminster. The event was attended by representatives from hundreds of schools and academies nationwide and the families of the prizewinners with presentations made by the guest speaker, entrepreneur, chef and musician, Levi Roots. Two of our former students, Raadiyah Jauny and Fartun Hassan were nominated for awards after making excellent progress from KS2 through to their GCSEs. Loren Townsend-Elliott was given a special award having achieved success whilst managing enormous challenges. Pictures can be found in this edition of the Greensheet. Congratulations to these young people and their families and carers; it was only a shame we could not have taken along more students, parents/carers and staff. Please note that our own Presentation Award Ceremony for former Year 11 students will take place on December 3rd.

(Continued overleaf)

(Continued)

Also this week, a number of our Year 9 students were successful in the Ball Crew Selection Event for the World Championship Wheelchair tennis due to take place in December. Congratulations to the following seven girls who were selected by the coaches:

Assa Kanoute 9F, Ismay Bowles 9f, Anna Howles 9G, Jamilia Edwards 9G, Aliyah Ahmed 9C, Lily Deason 9C and Remi Odetoyinbo 9H.

An important reminder about forthcoming early closures this half term- please note:

We have an **early closure for all students on Thursday October 15th and a late start on Friday October 16th** due to our annual Open Evening.

Year 7 leave school at **12.30pm on Wednesday October 21st** due to the Year 7 settling-in afternoon.

Finally **Eid Mubarak** to all our Muslim colleagues, students and families!

Thank you all for your continued support.

Best wishes,
Meryl Davies

Design-a-Sign Competition winner

As mentioned in a previous edition of the Greensheet dated 10th September 2015, here is Malika Arshad with her mum Mrs Arshad and Leader of the Council Cllr. Chris Robbins.

She was the Waltham Forest Borough winner of the Mini-Holland Design-a-Sign poster competition. Malika designed an eye-catching poster encouraging drivers to keep to 20 mph in built up areas. Malika won herself a new bike plus £3000 of bicycle storage at WSFG.



Year 11 Student Achievement Celebration Central Hall, Westminster



Loren Townsend-Elliott
at the PiXL student
Awards - Receiving her
award from Levi Roots,
Sept 2015

Loren Townsend-Elliott and
Ms Famiglietti at the PiXL Student
Awards Sept 2015



Raadiyah Jauny and Ms Davies at the
PiXL Student Celebration Sept 2015

Message for Year 6 Parents and Carers



Walthamstow
SCHOOL FOR GIRLS

OPEN EVENING

Thursday 15th October 2015 6-8pm



Neglect not the gift that is in thee

To find out more visit www.wsfg.waltham.sch.uk

The Focus of the Fortnight

28th Sept – 9th Oct 2015

Student lanyards, one cards and conduct cards.

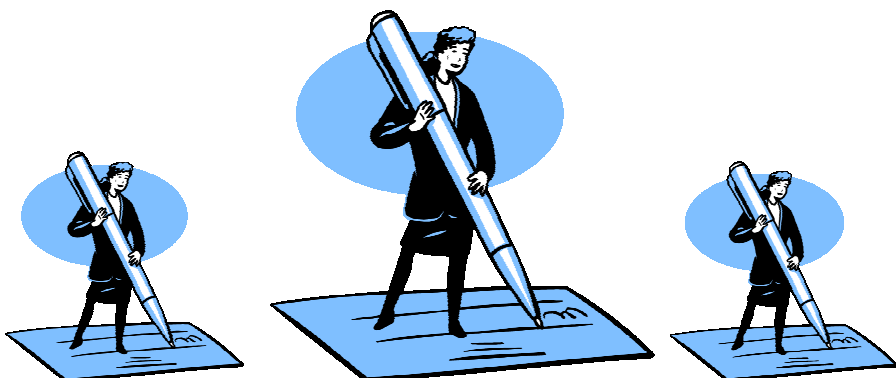
These items are ESSENTIAL pieces of your daughter's uniform at WSFG. She is expected to have them and wear them every day at school. If she does not have one or any number of these items with her on a school day, she will be given an automatic detention of 1 hour the following week, of which you will be informed by letter and / or text. The student will also have her conduct card signed.

All students have been given a lanyard, a photo ID One Card and a Conduct Card that they must wear at all times during the school day.


Please ensure she has these items ready for school.

Thank you for your support in this and in all school matters.

Ms Pratt
Assistant Headteacher



As You Like It.



Walthamstow School For Girls Presents:
As You Like It. From Monday 19th
at The Pleasance Theatre N7 9EF October
Book Tickets: See Ms Wallace G66

As You Like It

ticket price:

£6 if booked through Ms Wallace in G66,
more if booked through the Box Office

NEPAL EARTHQUAKE BOOK APPEAL

Our school is collecting children's books for Barpak village, which was destroyed in the 2015 earthquake.

The donated books can be for any ages.

So, please support this appeal and ask your daughters to bring their books to the Learning Resource Centre by Friday 27th November 2015.

Thank you for your support,

Ms Kelly
LRC



Lost Property

Students are reminded that they can collect lost property at **3.30pm** every day.

Parents and carers may also collect lost property any day after school.

A reminder to parents and carers that if your daughter's clothing has her name and form marked in it, it can be returned to her more easily.

The lost property box will be emptied at the end of term, anything that has not been claimed will be disposed of.

Thank you
Front Office

**DEADLINE EXTENDED TO FRIDAY 25TH
SEPTEMBER
FOR WSFG STUDENTS ONLY!
DON'T MISS OUT!**



SOHO THEATRE WALTHAMSTOW WORKSHOPS

**1 Oct – 10 Dec, 6 – 8pm (Thu evenings)
at Walthamstow School For Girls
£75 (free bursaries available)**

Are you 11-16 years old and looking for something fun to do in Walthamstow?

Join Soho Theatre and local company Slap Haddock to learn a range of theatre skills and build towards performing in a brand new show. Everyone is welcome, whether you're already interested in drama, music, comedy, performing or just fancy trying something new.

Get in touch with Jules to apply:
jules@sohotheatre.com or 0207 478 0113 (deadline 23 Sep)

Waltham Forest Parent Forum

Supporting families of children and young people with SEN/ additional needs

For information about a series of free events, workshops and training relating to SEN/additional needs follow the link below

www.walthamforestparentforum.com

Events include training on Education, Health and Care Plans; a Sleep Workshop; Behaviour Management; Dad's Group; Contact A Family-Coping with Stress Workshop; Parent/Carer Support Group.



COMING SOON: FREE PARENTING CLASSES!

If you'd like some practical tips to deal with un-cooperative teenagers or demanding toddlers, why not come along to these FREE classes for parents and carers, run by experts from CLASS*, starting on Wednesday 1st October, 6-8pm.

A registration form will be available in next week's Greensheet; please contact me for more information; rfinamore@wsfg.waltham.sch.uk or 0208 509 4494 (Monday to Friday).

The course will run for 5 weeks and will be held in school; a crèche may be available if required.

*CLASS is Waltham Forest's Adult Learning Service.

Mrs Finamore
Community Liaison Co-ordinator

Message to Parents and Carers: Ex-student would like research volunteers

Susanna O'Brien, an ex-student at WSFG and now studying at Oxford University, is currently undertaking a research project at the UCL Institute of Education. Susanna studied with us from 2006 to 2011, before moving on to sixth form at The Latymer School, Edmonton where she realised she wanted to study Experimental Psychology. Since being accepted at her Oxford College, St Edmund Hall, in 2013, Susanna has been involved in a wide range of activities. She has carried out an internship helping researchers at Oxford investigate how mindfulness meditation can help ease the symptoms of medical disorders that do not have a known biological cause, and has been Captain of Coxes for her college rowing club (which involved lots of shouting at rowers and desperately trying to avoid crashing the boat!). In the summer break from her studies, she is now working on a project with UCL which combines her two main interests: psychology and education. She is looking at whether there are differences in how autistic and non-autistic children pay attention in the classroom, and is looking for students to aid her in her research by taking part in some activities. If you would like more information about Susanna's research project and would consider supporting her study, the information below provides details of how to contact her.

VOLUNTEERS WANTED!

Research Project: Perceptual Capacity in the Classroom

- Do you have an autistic, or non-autistic child aged 6-13 years old?
- Do you live in or around London?

If so, we'd love to hear from you!

We are researchers at the UCL Institute of Education, who are investigating the way in which people with and without autism pay attention to different things in the classroom. We are doing this research to help us understand more about the special skills and abilities of individuals with Autism Spectrum Condition.

The research involves two fun activities that take less than an hour in total.

- The first involves performing a series of puzzles that involve identifying the matching image from a set of images, and explaining the meaning of a set of words.
- The second is a computer-presented task in which your child will watch and listen to someone telling a story and will then answer questions about it at the end.

The session can be done at a time and location that is convenient to you, and local travel expenses will be reimbursed.

If you and your child are interested in taking part, or would like more information, please email Susanna O'Brien on susanna.obrien@seh.ox.ac.uk or Dr Anna Remington on a.remington@ioe.ac.uk.

We look forward to hearing from you!



Cycling Opportunity

Now that we have 'Mini Holland' in full swing - here in Walthamstow, would you like to gain Levels 1 and 2 cycle in cycling? We will be offering a course here at school. This course will give your daughter the confidence and skills to allow her to safely access these cycle zones.



The training will be provided by Cycle Confident Ltd who work with the Road Safety department at the council. The training will be after school here at school and the surrounding roads, for one week, and is **free**. Bikes and helmets will be available for her to use.

The training will cover both off-road Level 1 training (core basic skills) and then move to on-road Level 2 training on quiet local roads. This course is therefore not suitable for complete beginners to cycling. This course will start week beginning 12th October 3.30pm – 5pm.

Only 8 places are available so letters will need to be returned speedily and places will be given out in order of return.

Session details:

12 October 2015, 15.30 -17.00
13 October 2015, 15.30 -17.00
14 October 2015, 15.30 –1700
15 October 2015, 15.30 –1700
16 October 2015, 15.30 - 1700

Letters can be obtained from Monday 28th September from my office G38 and returned to me as soon as possible.

Mrs Dominique

WHAT'S ON IN WALTHAMSTOW AND BEYOND

WALTHAMSTOW

UNTIL 17TH JANUARY: THE WORKHOUSE - LIFE ON THE EDGE - A NEW EXHIBITION AT THE VESTRY HOUSE MUSEUM, VESTRY ROAD, E17, 10AM- 5PM WEDNESDAY TO SUNDAY, FREE. Find out how people lived and worked in the parish

Workhouse, now our local museum; see www.walthamforest.gov.uk/vestry-house

THURSDAY 24TH SEPTEMBER: LAUNCH OF WALTHAMSTOW'S TWILIGHT MARKET, TOWN SQUARE AND GARDENS, HIGH STREET, E17, 5-9.30PM, FREE. This new Council initiative will run monthly, with food, drink, craft and design stalls, and occasional entertainment. See www.street-concepts.co.uk for more information.

SATURDAY 26TH SEPTEMBER: TOUCH THE PAST- OBJECT HANDLING SESSION AT VESTRY HOUSE MUSEUM, VESTRY ROAD, E17, 2.30-4PM, FREE. Bring history to life by handling genuine historical artefacts from the Museum's collection! All welcome.

EVERY SATURDAY: INNATE MARTIAL ARTS ACADEMY OFFERS CHILDREN'S AND ADULTS' CLASSES IN KUNG FU AND OTHER MARTIAL ARTS, HARMONY HALL, TRURO ROAD, E17 7BY, 10.30AM-12PM (ALSO WEDNESDAY EVENINGS). If you want to learn self defence and get fit, try something new! Email Tahir Amin, Head Instructor, on: innatebaji@gmail.com or ring 07988842157 for details of charges etc.

SUNDAY 27TH SEPTEMBER: STOW FILM LOUNGE PRESENTS OLIVER! (CERT U), COMMUNITY ROOM, VESTRY HOUSE MUSEUM, VESTRY ROAD, E17 9NH, 2PM FOR 2.30 SCREENING, £5.50 ADULTS, £4.50 CONCESSIONS. Enjoy this classic 1968 film whatever the weather- book on: www.stowfilmlounge.com or ring 07910 643 987 (Nick Bertram).

WEDNESDAY 30TH SEPTEMBER: NEW TERM FOR GROW YOUR OWN THEATRE'S YOUTH THEATRE, GNOME HOUSE, BLACKHORSE LANE, E17, FIRST CLASS £5.

Grow Your Own Theatre has been running popular youth theatre sessions for several years at The Mill and Harmony Hall, but they are moving to a bigger venue near Blackhorse tube station to meet demand. 11-14 year olds meet at 4-5.30pm, and 14-18 year olds meet from 5.30-7pm, for 10 weeks, with a devised performance in the last week. Contact Sarah Chase on 0774 034 3240 or visit:

www.gyot.org.uk for more information.

BEYOND WALTHAMSTOW

SATURDAY 26TH AND SUNDAY 27TH SEPTEMBER: COUNTRYSIDE LIVE SHOW, WALTHAMSTOW AND LEYTON MARSHES, OFF LEA BRIDGE ROAD, E10, 10AM-5PM, £5 ADULTS, CHILDREN FREE. Enjoy falconry, ferret racing, dancing sheep, willow weaving, bushcraft and much more at this popular annual event, with plenty of food, drink and information stalls too. See www.visitleevalley.org.uk

SUNDAY 27TH SEPTEMBER: ORGANICLEA OPEN DAY, HAWKWOOD PLANT NURSERY, 115 HAWKWOOD CRESCENT, CHINGFORD, E4 7UK, 12-4PM, FREE. Get advice on gardening, buy plants and seeds and explore the 12 acre site of organic horticulture. Ring 0208 524 4994 for more information. Nearest station: Chingford.

SATURDAY 26TH AND SUNDAY 27TH SEPTEMBER: THE LAST WEEKEND OF THE TOTALLY THAMES FESTIVAL- THE ANNUAL CELEBRATION OF LONDON'S HISTORIC RIVER, VENUES ACROSS LONDON, MANY FREE EVENTS. As well as walks, talks and exhibitions, you can enjoy underground theatre- Penny Dreadful productions present Creak! At Creekside Discovery centre, 14 Creekside, Deptford, SE8 4SA, on Saturday at 4.30 and 6.30pm £12, £10 concessions. This interactive show will be staged in the Victorian sewers, and is suitable for 8 years upwards; waders will be provided! See www.totallythames.org.uk for details.

Enjoy your free time!

Mrs Finamore